

Valvole Farfalla
Butterfly valves

ZVF

Valvola ZVF Farfalla

Nata da un progetto essenziale, la valvola farfalla di Bardiani Valvole trova applicazione in diversi settori; con un disegno semplice si colloca in una fascia di prodotti altamente competitiva.

ZVF valve Butterfly

Born from an essentially project, the butterfly valve by Bardiani Valvole has wide ranging applications; married with a simple design, it is part of a range of highly competitive products.



Dati Tecnici Technical details

Struttura valvola

La valvola a farfalla è composta da 2 mezzi corpi, farfalla e guarnizione, ed assemblata con dadi e bulloni. I cilindri pneumatici a Doppio o Semplice Effetto sono ricavati interamente da barra piena e predisposti per l'applicazione di componenti elettrici.

Il supporto di accoppiamento fra cilindro e corpo valvola realizzato in microfusione, è stato progettato per consentire eventuali registrazioni della valvola.

- attacchi da DN10 a DN150: DIN, SMS, IDF, BS(RJT), ISO, Clamp, Flangia (attacchi diversi a richiesta)
- pressione massima prodotto: 10 bar (145 psi)
- pressione minima prodotto: vuoto
- temperatura massima prodotto: 120°C (248°F)
- temperatura minima prodotto: -10°C (14°F)
- materiale a contatto col prodotto: AISI 316L (1.4404)
- materiale guarnizioni a contatto col prodotto (omologazione FDA): EPDM, FKM, MVQ(Silicone), NBR e (altre guarnizioni a richiesta)
- finitura superficiale a contatto col prodotto: Ra0.8µm (altri tipi di finitura).

Struttura attuatore pneumatico

- attacchi aria 1/8" (BSP)
- pressione aria da 6bar (87 psi) a 8bar (116 psi)
- materiale AISI 304L (1.4307)
- materiale guarnizioni NBR

Valve structure

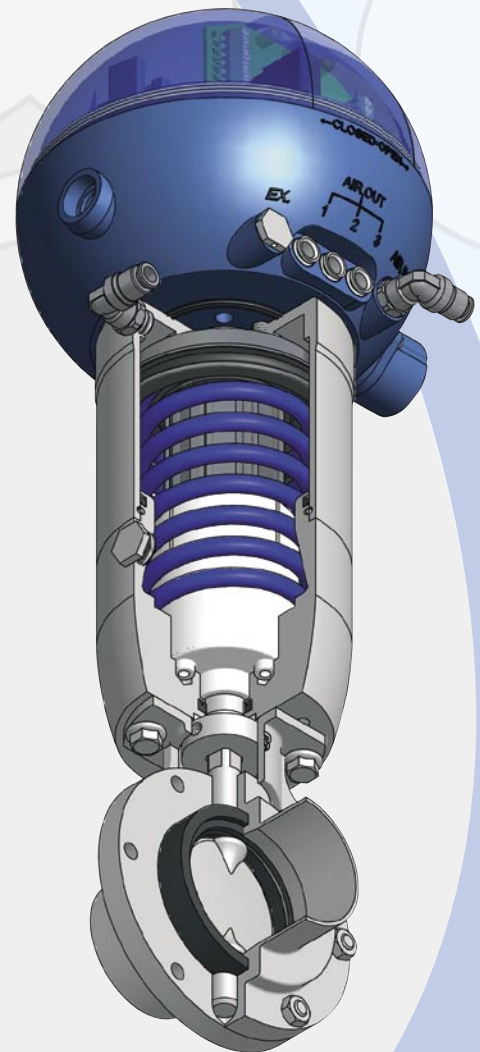
Valve bodies are made from solid stainless steel bar. This provides valve bodies with maximum strength avoiding any flaws and stresses that may occur from welding processes.

- connections from DN10 to DN150: DIN, SMS, IDF, BS(RJT), ISO, Clamp, Flange (different connections upon request)
- max. working pressure: 10 bar (145 psi)
- min. working pressure: full vacuum
- max. product temperature: 120°C (248°F)
- min. product temperature: -10°C (14°F)
- material in contact with the product: AISI 316L (1.4404)
- gaskets in contact with the product: (homologation FDA): EPDM, FKM, MVQ (Silicon), NBR (other seals available upon request)
- finish on surfaces in contact with the product: Ra0.8µm (other types of surface finish upon request).

Pneumatic actuator specifications

- air connectors 1/8" (BSP)
- air pressure from 6 bar (87 psi) to 8 bar (116 psi)
- material AISI 304L (1.4307)
- gasket material NBR

MACH



ZVF

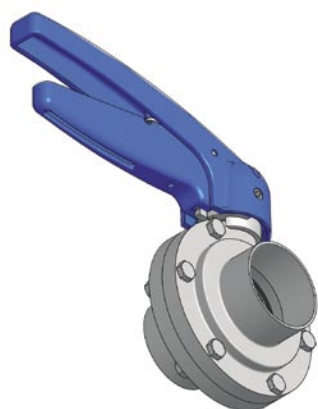
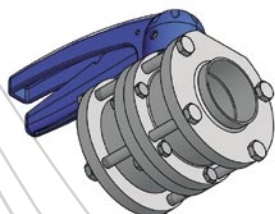


Valvola farfalla-WAFER

Questa tipologia di attacchi, disponibili per la linea della valvole farfalla, è stata progettata con l'obiettivo di semplificare la rimozione della valvola dalla linea di tubazione durante le operazioni di manutenzione.

Butterfly WAFER valve

This particular type has been engineered to allow an easy way to dismantle the butterfly valves from the pipeline.

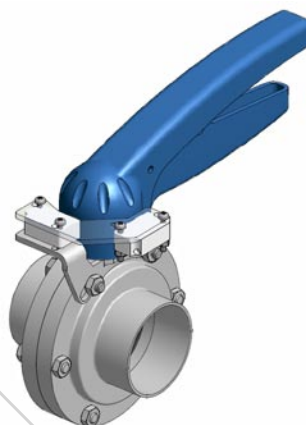


Comando manuale

Affidabile ed estremamente flessibile, la valvola manuale farfalla VVF sfrutta tutta la componentistica della valvola ZVF, tranne la parte pneumatica.

Hand control

Reliable and extremely flexible, the VVF manual valve uses all the parts from the ZVF valve apart from the pneumatic components.

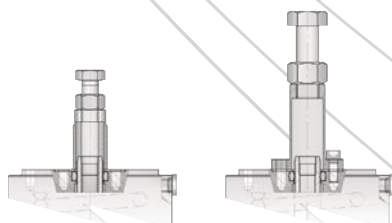


Sensori per VVF

L'applicazione di uno o due proximites consente di segnalare la posizione della valvola in fase di apertura e di chiusura.

VVF Proximities

One or two Proximity switches can be installed close to the lever; a feedback is given to an electrical board.



Limitatore di corsa

Accessorio che consente la regolazione meccanica dell'escursione della valvola.

Stroke limiter

Adjustable device which allows for a mechanical limitation of valve stroke.

Esecuzioni speciali su richiesta

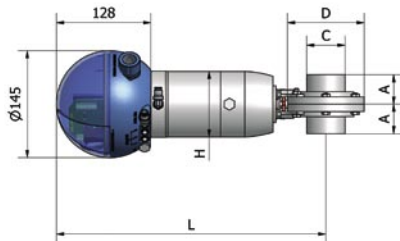
Ogni accessorio è disponibile su richiesta del cliente per tutti i diametri e tutte le configurazioni corpi valvola. E' inoltre possibile la personalizzazione di attacchi, diametri oppure soluzioni non presenti a catalogo. Bardiani Valvole consiglia di consultare sempre l'ufficio tecnico in fase d'ordine per ulteriori informazioni e studi di fattibilità.

Special options and variation on request

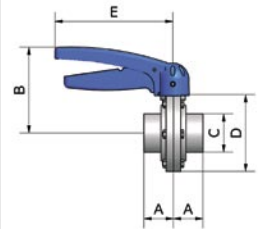
On request most accessories are available for all sizes of valve and body configurations. Additionally special ports, diameters and other tailor-made solutions are available. Bardiani Valve can also provide technical support, advice and feasibility analysis for other requests.

Dimensioni Dimensions

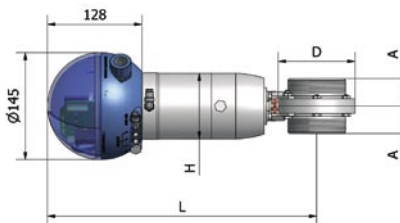
SALDARE / WELD DIN



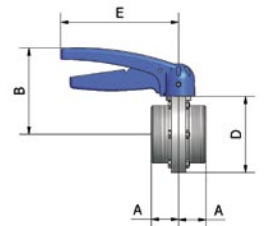
DN	A	B	C	D	E	H	L	C DIN11850/2
10	-					90	-	-
15	30	97	18x1	62	160		342	19x1.5
20	32	106	22x1.5	80	160		348	23x1.5
25	32	107	28x1.5	80	160		348	29x1.5
32	34	109	34x1.5	85	160		351	35x1.5
40	35	112	40x1.5	92	160		356	41x1.5
50	40	118	52x1.5	104	160	364	53x1.5	
65	43	129	70x2	125	160	105	375	70x2
80	36	137	85x2	142	160		384	85x2
100	36	147	102x2	162	160		394	104x2
125	56	161	132x3.5	200	220	168	491	129x2
150	62	176	157x3.5	230	220		504	154x2



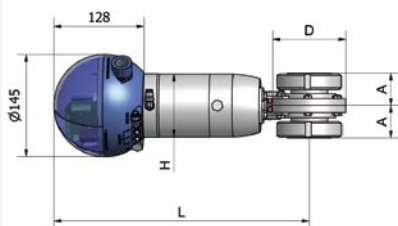
FEMMINA / MALE DIN



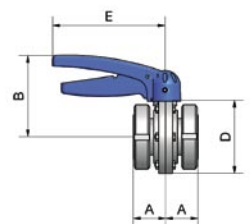
DN	A	B	D	E	H	L
10	34	97	62	160	90	342
15	34	97	62	160		342
20	35	106	80	160		348
25	35	107	80	160		348
32	36	109	85	160		351
40	35	112	92	160		356
50	37	118	104	160	364	
65	41	129	125	160	105	375
80	46	137	142	160		384
100	47	147	162	160		394
125	56	161	200	220	168	491
150	62	176	230	220		504



MASCHIO+GIRELLA / LINER+NUT DIN



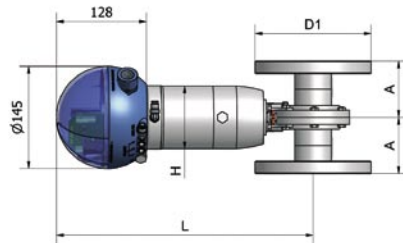
DN	A	B	D	E	H	L	
10	-					90	-
15	35	97	62	160	342		
20	38	106	80	160	348		
25	38	107	80	160	348		
32	41	109	85	160	351		
40	41	112	92	160	356		
50	46	118	104	160	364		
65	50	129	125	160	105	375	
80	57	137	142	160		384	
100	70	147	162	160		394	
125	90	161	200	220	168	491	
150	99	176	230	220		504	



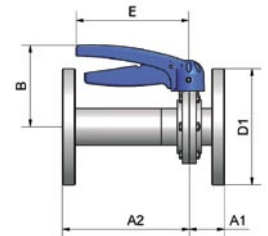
ZVF

Dimensioni Dimensions

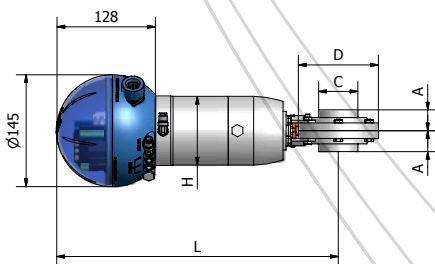
FLANGIA / FLANGE PN10



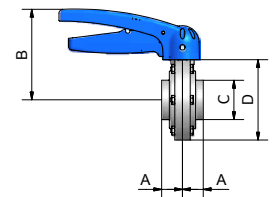
DN	A/A1	A2	B	D1	E	H	L
10						-	
15						-	
20						-	
25	71	204	107	115	160	90	348
32	75	206	109	140	160		351
40	76	206	112	150	160		356
50	80/50	208	118	165	160		364
65	84/54	208	129	185	160	105	375
80	82/52	210	137	200	160		384
100	84	212	147	220	160		394



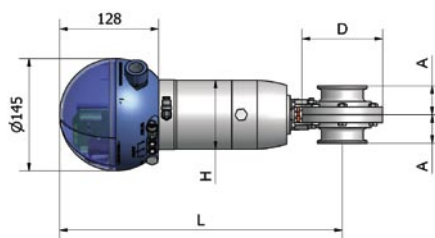
SALDARE / WELD INCHES



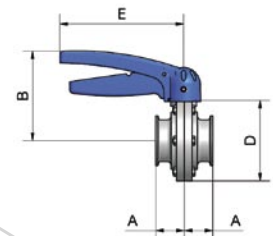
DN	A	B	C	D	E	H	L
1"	26	107	25.4x1.5	80	160	90	348
1 1/2"	25	109	38.1x1.5	92	160		356
2"	27	112	50.8x1.5	104	160		364
2 1/2"	28	126	63.5x1.5	120	160	105	375
3"	30	131	76.1x2	130	160		384
4"	36	147	101.6x2	162	160		394
5"						-	
6"						-	



CLAMP

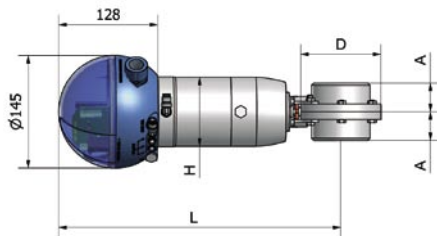


DN	A	B	D	E	H	L
1"	35	107	80	160	90	348
1 1/2"	35	109	92	160		356
2"	37	112	104	160		364
2 1/2"	41	126	120	160	105	375
3"	43	131	130	160		384
4"	51.5	147	162	160		394
5"					-	
6"					-	

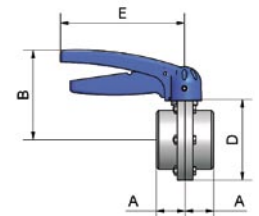


Dimensioni *Dimensions*

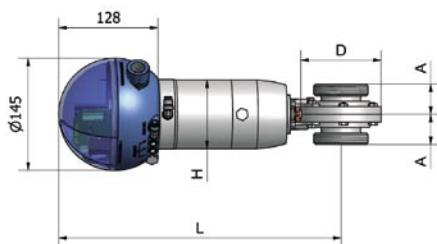
FEMMINA / MALE ISO



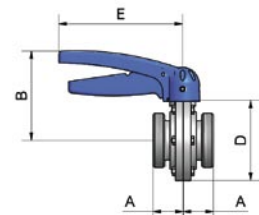
DN	A	B	D	E	H	L
1"	35	107	80	160	90	348
1"1/4	35	107	85	160		351
1"1/2	35	109	92	160		356
2"	37	112	104	160		364
2"1/2	41	126	125	160	105	375
3"	41	131	142	160		384
4"	43	147	162	160		394



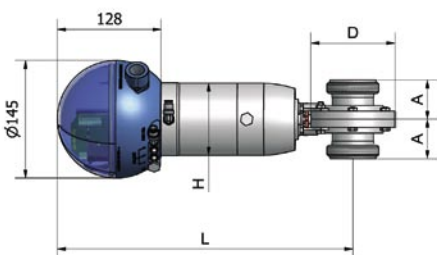
FEMMINA / MALE SMS



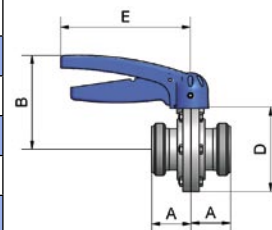
DN	A	B	D	E	H	L	
1"	35	107	80	160	90	348	
1"1/2	37	109	92	160		356	
2"	39	112	104	160		364	
2"1/2	52	126	120	160	105	375	
3"	54	131	130	160		384	
4"	61	147	162	160		394	
5"	-						
6"	-						



FEMMINA / MALE IDF



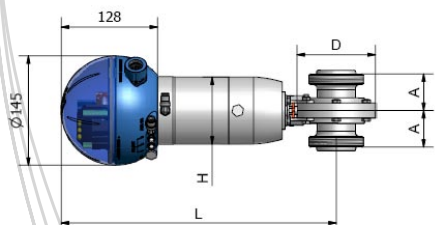
DN	A	B	D	E	H	L
1"	47.5	107	80	160	90	348
1"1/2	46.5	109	92	160		356
2"	48.5	112	104	160		364
2"1/2	49.5	126	120	160	105	375
3"	51.5	131	130	160		384
4"	57.5	147	162	160		394



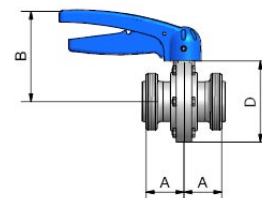
ZVF

Dimensioni Dimensions

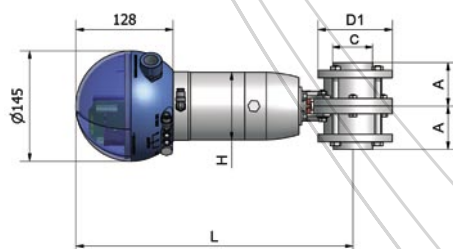
FEMMINA / MALE BS (RJT)



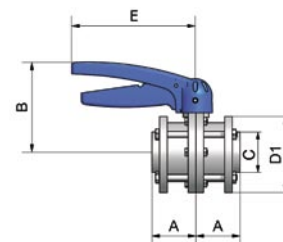
DN	A	B	D	E	H	L
1"	47.5	107	80	160	90	348
1"1/2	46.5	109	92	160		356
2"	48.5	112	104	160		364
2"1/2	49.5	126	120	160	105	375
3"	51.5	131	130	160		384
4"	57.5	147	162	160		394
5"	-					
6"	-					



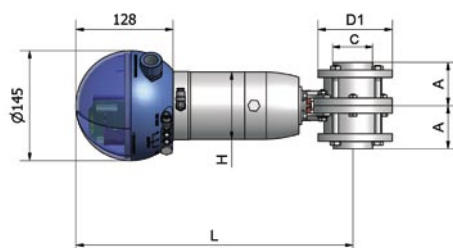
VALVOLA FARFALLA/ BUTTERFLY VVF WAFER DIN



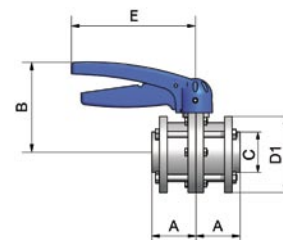
DN	A	B	C	D1	E	H	L
10	-						
15	-						
20	-						
25	57	107	28	80	160	90	348
32	57	109	34	85	160		351
40	57	112	40	92	160		356
50	57	118	52	104	160	105	364
65	57	129	70	125	160		375
80	57	137	85	142	160		384
100	57	147	101.6	162	160	168	394
125	66	161	132	200	220		491
150	-						



VALVOLA FARFALLA/ BUTTERFLY VVF WAFER INCHES



DN	A	B	C	D1	E	H	L
1"	57	107	25.4	80	160	90	348
1"1/2	57	112	38.1	92	160		356
2"	57	118	50.8	104	160		364
2"1/2	57	129	63.5	120	160	105	375
3"	57	137	76.2	130	160		384
4"	57	147	101.6	162	160		394

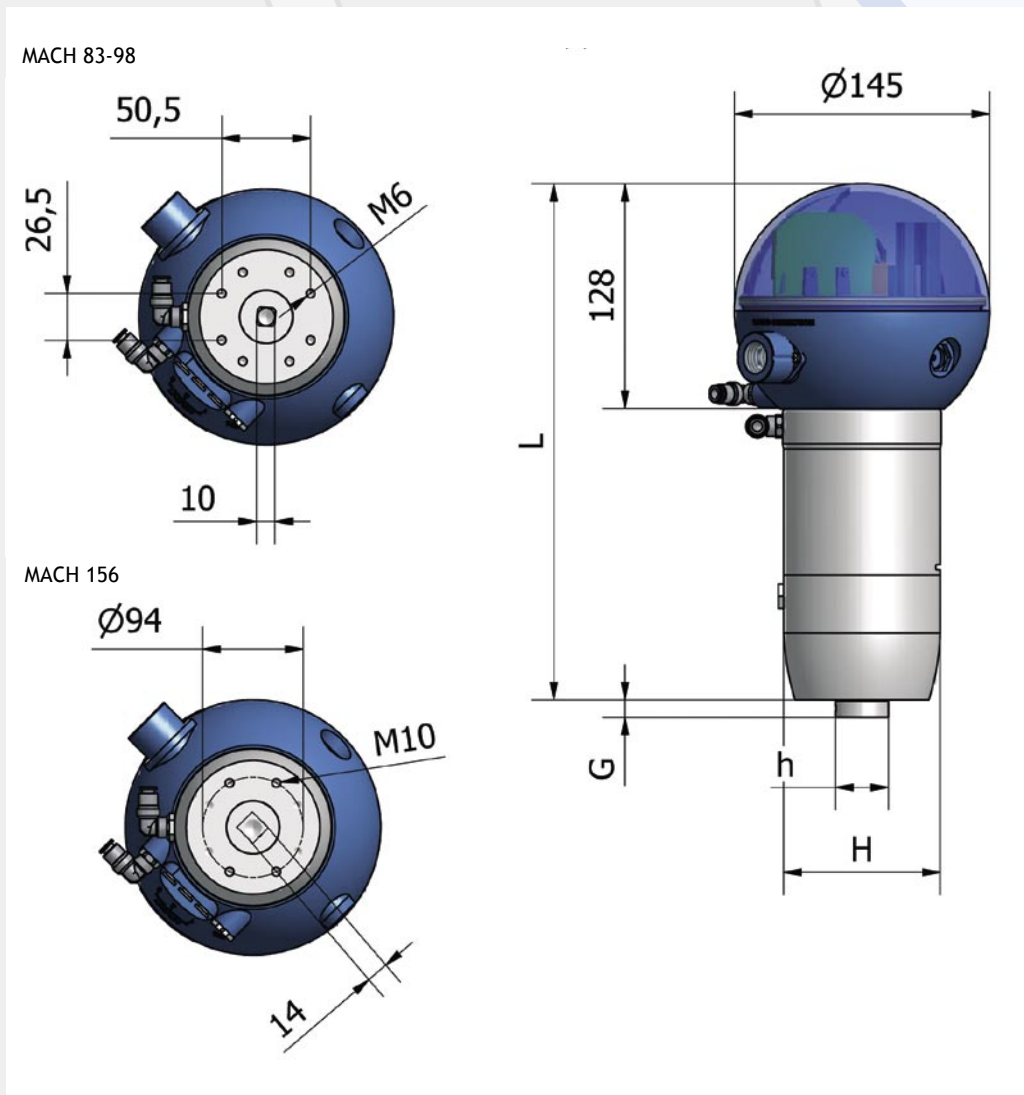


dimensioni/dimension (mm)

Legenda / Key	
S/S DIN 11850/2	Saldare - Welding Din 11850/2
-	Su richiesta/On demand

Dimensioni Dimensions

Dimensioni attuatore pneumatico MACH per valvola Farfalla Dimensions of pneumatic actuator MACH for Butterfly valve



	G	H	h	L
83 SE - DE	10	90	30	293.5
98 SE - DE	10	105	30	293.5
156 SE - DE	16	168	45	370

Legenda/Key	
SE	Semplice Effetto Single acting
DE	Doppio Effetto Double Acting
83 - 98 - 156	Diametro attuatore Actuator diameter

Valvole a farfalla manuali - Manual butterfly valves								
DN	S/S	F/F	F/S	F/M	M/S	M/M	CLAMP	WAFER
25 - 1"	0,95	1,2	1,1	1,3	1,2	1,45	1,2	1,9
32	1,05	1,35	1,2	1,5	1,35	1,65	-	2
40 - 1" 1/2	1,15	1,55	1,35	1,65	1,5	1,9	1,3	2,4
50 - 2"	1,45	1,95	1,7	2,2	1,95	2,4	1,6	3
65 - 2" 1/2	2,05	2,8	2,4	3,2	2,85	4,5	1,8	3,8
80 - 3"	2,85	3,9	3,4	4,5	3,95	5,05	2,5	5
100 - 4"	3,8	4,6	4,15	5,8	5,4	7,05	4,2	6
Valvole a farfalla pneumatiche - Pneumatic butterfly valves								
DN	S/S	F/F	F/S	F/M	M/S	M/G	CLAMP	WAFER
25 - 1"	4,6	4,85	4,75	4,95	4,85	5,1	4,8	5,5
32	4,7	5	4,85	5,15	5	5,3	-	5,7
40 - 1" 1/2	4,8	5,2	5	5,3	5,15	5,55	5	6
50 - 2"	5,1	5,6	5,35	5,85	5,6	6,05	5,3	6,6
65 - 2" 1/2	6,95	7,7	7,3	8,1	7,75	8,5	6,7	7,7
80 - 3"	7,8	8,85	8,35	9,45	8,9	10	7,3	10
100 - 4"	8,75	9,55	9,1	10,75	10,35	12	9	11

Nota bene

- I pesi indicati sopra si riferiscono alla configurazione standard: attuatore a semplice effetto (solo valvole pneumatiche).
- Verificare sempre il peso della relativa unità di controllo Giotto Top abbinata alla singola valvola.
- I pesi indicati hanno valore puramente indicativo.

Legenda / Key	
S/S	Saldare - Welding
F/F	Femmina - Male
F/S	Femmina/saldare - Male/welding
F/M	Femmina/Maschio + girella - Male/Liner + nut
M/S	Maschio + girella/saldare - Liner + nut/Welding
M/G	Maschio + girella - Liner + nut
CLAMP	Clamp
WAFER	Wafer
-	Su richiesta/On demand

Take note

- Above weights refer to standard configurations: simple acting actuator (pneumatic valves only).
- Please check the weight of the "Giotto Top" valve control unit
- Above weights have pure indicative values.